



# 2<sup>nd</sup> International Congress of Breast Disease Centers



Paris, February 9-10, 2012  
PROF. RUBEN ORDA

# Breast Centers / Units Accreditation

## A CALL FOR A COMMON WORLD PLATFORM



# Breast Cancer Care

## Breast Centers



# SENOLOGY

## Science, Philosophy and Art





# Michelangelo (1475-1564)

Day and  
Night





Raphael (1520)

The Fornarina







# Rubens (1577-1640)



The Three  
Gracias

# Rubens (1577-1640)



## The Three Gracias

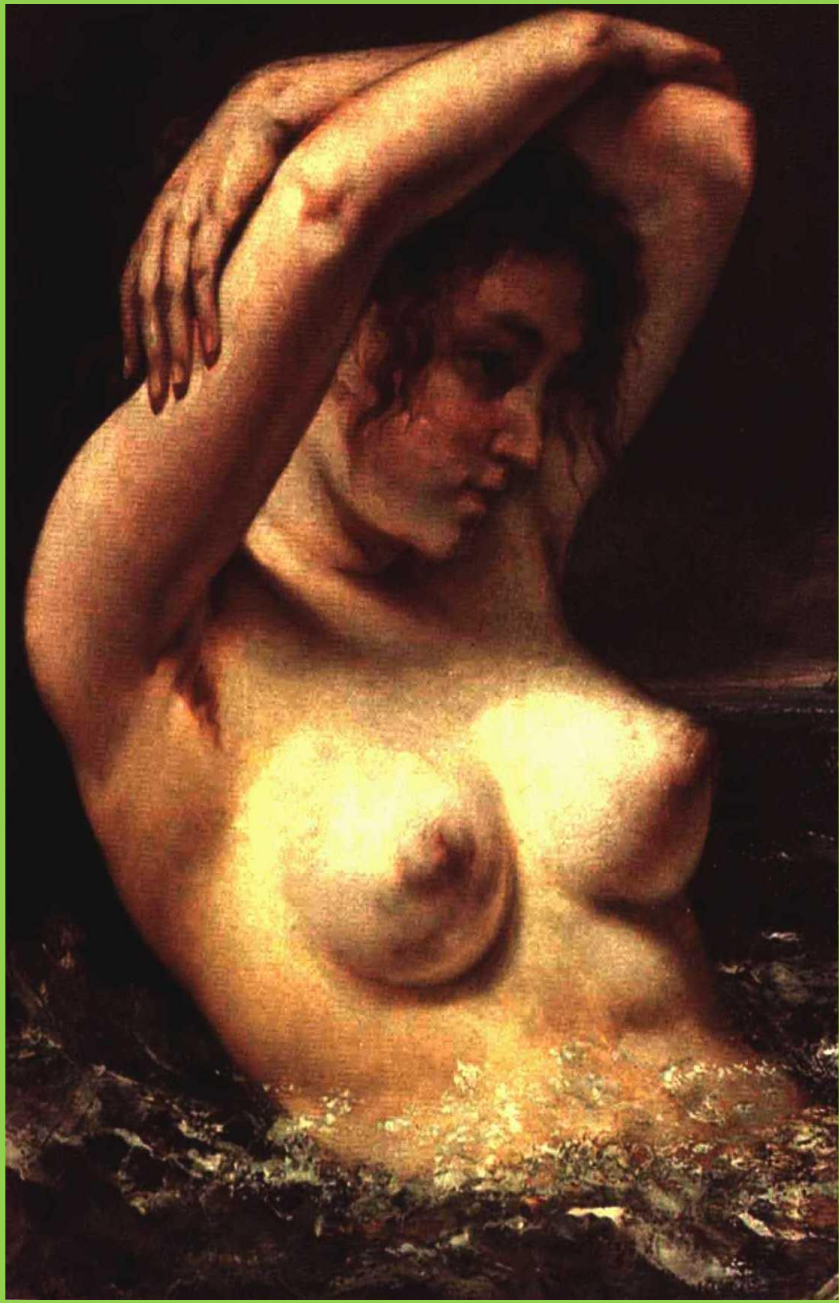
# Rembrandt (1606-1669)

## Bathsabe and the letter of David





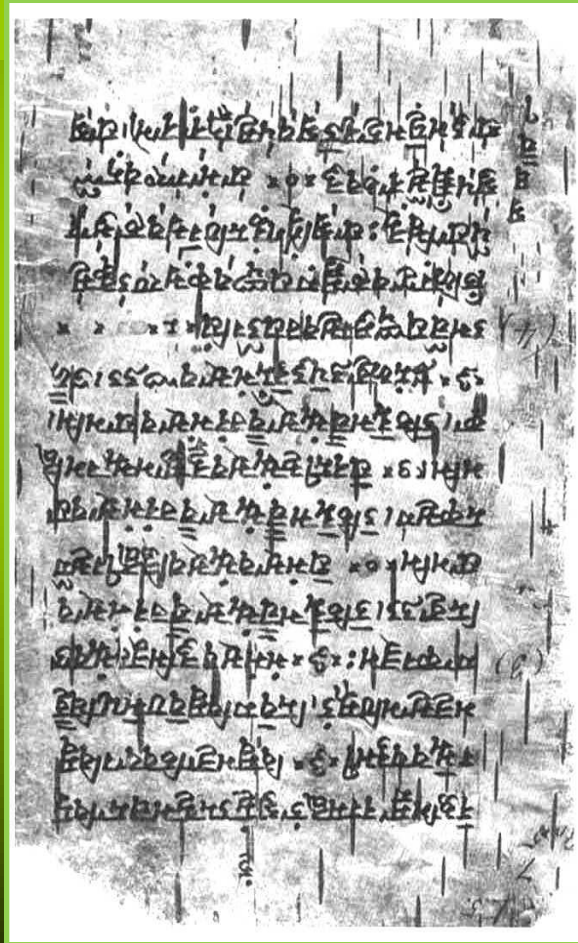




**Gustave Courbet**  
**(1868)**

**Lady in the Waves**

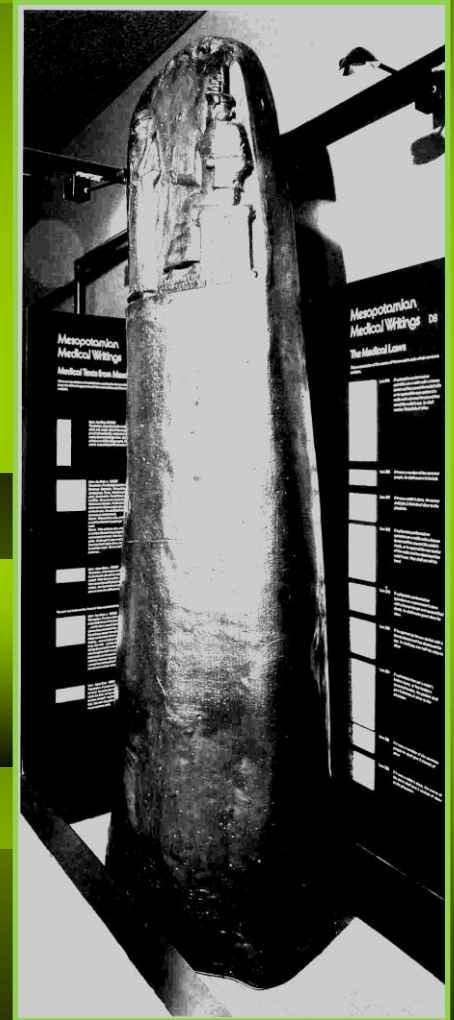
# Yajuur Veda (2000 BC)



Cauterization

# Hammurabi Code (1950 BC)

Amputation



Prof. Ruben Orda



# Ebers Papyrus (1502 BC)



Cauterization

# Andreas Vesalius (1514-1564)



Wide Resection



# Jean Louis Petit (1674-1750)

## Scientific Basis of R.M.



# TRAITÉ DES MALADIES CHIRURGICALES, ET DES OPÉRATIONS QUI LEUR CONVIENNENT.

Ouvrage posthume de M. J. L. PETIT,  
De l'Académie Royale des Sciences, & de la Société  
Royale de Londres, ancien Directeur de l'Académie  
Royale de Chirurgie, Censeur & Professeur Royal  
des Écoles, &c. &c.

Mis au jour par M. LESNE, ancien Prévôt du Collège, &  
Conseiller du Comité de l'Académie Royale de Chirurgie.

---

3 Vol. in-8°. avec 90 Fig. Prix 16 liv. 4 s. brochés.

---

TOME TROISIÈME.



A PARIS,

Chez P. Fr. DIDOT le jeune, Libraire de la Faculté de  
Médecine, Quai des Augustins.

---

M. DCC. LXXIV.

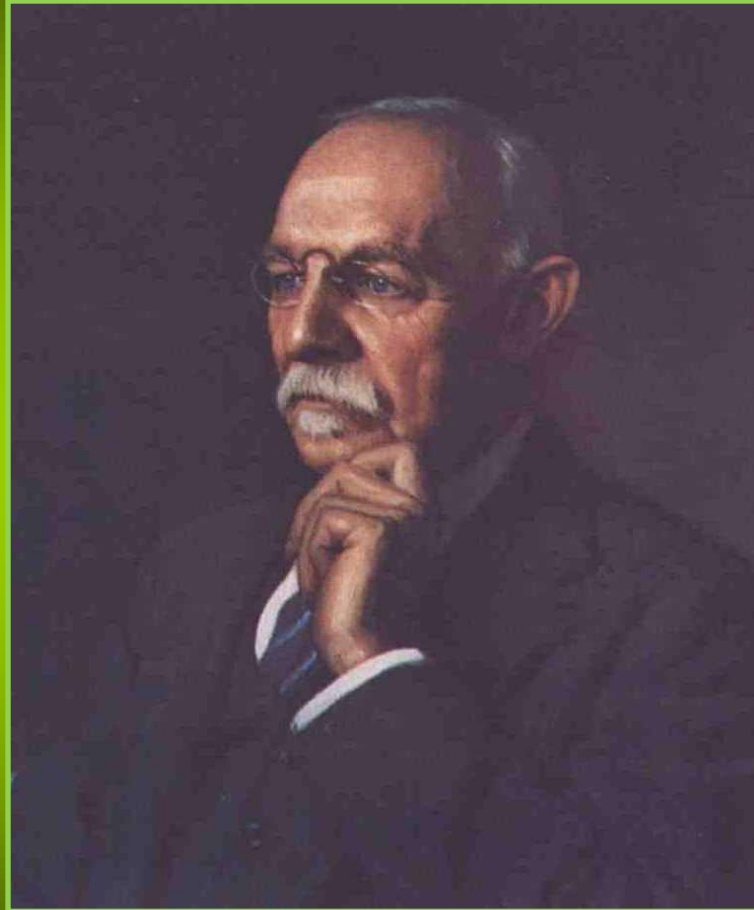
AVEC APPROBATION, ET PRIVILEGE DU ROY.

---

İ : A : M :

---

# William S. Halsted (1882)

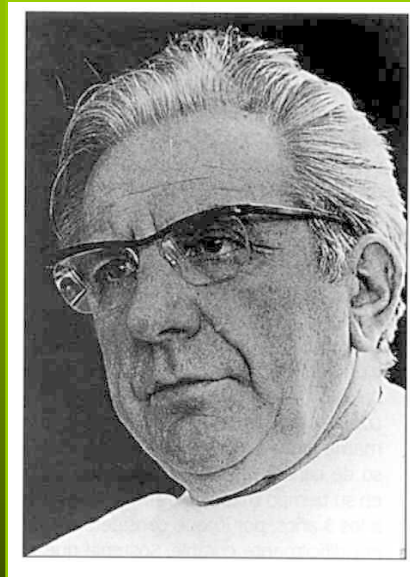


Radical Mastectomy



# Charles-Marie Gros

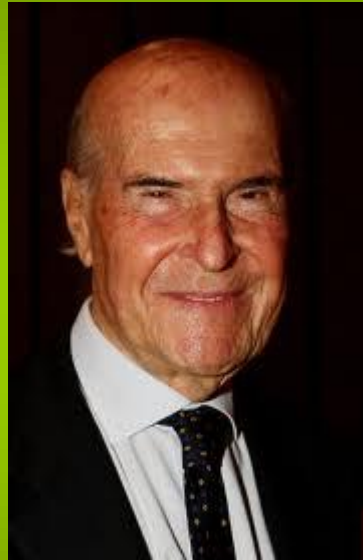
**First Health Service for the Diagnosis and  
Treatment of Breast Diseases (1960)**



**SIS (1976)**

# Umberto Veronesi

(1970)



Changing treatment “from maximal tolerated to minimal effective”


# Breast Cancer Care

## Breast Centers



# Breast Centers

- **Patient-Oriented System**

- **Comprehensive** 
  - Diagnostic
  - Therapeutic
  - Support

- **Multidisciplinarity**

- **Multiprofessionality**





*Cancer, 1997 Jun 15 (12):2380-4. ■*

**Multidisciplinary breast cancer clinics. Do they work?**

*Gabel M, Hilton NE, Nathanson SD.*

*J. of Surgical Oncology, 1998;69:203–205. ■*

*Guest Editorial: **State-of-the-art breast units - a possibility or a fantasy? A comment from the US.***

*Silverstein MJ.*

*European J. of Cancer, 2000; 36 (18):286-2287. ■*

**Should specialist breast units be adopted in Europe? A comment from Europe.**

*Mansel RE.*

*MJA 2003; 179 (10): 528-531. ■*

**Multidisciplinary care for women with early breast cancer in the Australian context: what does it mean?**

*Zorbas H, Barraclough B, Rainbird K, Luxford K, Redman S.*

*Breast J. 2003 Jan-Feb;9(1):60-3. ■*

**Breast cancer multi-disciplinary teams in England: much achieved but still more to be done.**

*Whelan JM, Griffith CD, Archer T.*

*Oncology, 2004 Sep;18(10):1263-1275.*

**Interdisciplinary breast cancer care: declaring and improving the standard.**

*Rabinowitz B.*

*European J. of Cancer, Supplements, 2004 March 2 (3):162-163.*

**Breast cancer units can significantly improve surgical management of early invasive breast cancer.**

*Fenaroli P, Giuliano L, Guerra U, Candiago E, Valentini M, Belfiglio M, Bettini A, Labianca R, Guzzettis R, Tonini C.*



*Breast, 2006 Feb;15(1):119-22. ■*

*Guest Editorial, Multidisciplinary Cancer Clinics: Their Time Has Come.*

*Chang AE, MD.*

*Breast Care, 2006;1:150–151. ■*

*Editorial, Breast Centers Revisited – a Critical Perspective.*

*Gnant M.*

*Mayo Clin. Proc, 2007 Aug; 82(8):999-1012. ■*

*A multidisciplinary approach to the management of breast cancer: prevention and diagnosis.*

*Pruthi S, Brandt KR, Degnim AC, Goetz MP, Perez EA, Reynolds CA, Schomberg PJ, Dy GK, Ingle JN.*

# Breast Cancer Improved Care

- Centralized treatment
- Multidisciplinary teams
- Earlier diagnosis
- Treatment protocols
- Improved hormonal & chemotherapy options



# Multidisciplinary Breast Care Team

**Surgery**

**Oncology**

**(Radiation & Medical)**

**Radiology**

**Pathology**

**Genetics**



Prof. Ruben Orda



# Multidisciplinary Breast Care Team

Nuclear Medicine  
Oncology Nursing  
Psycho-Oncology  
Social Assistance



# Breast Centers Benefits

- ↑ Standard of Care
- ↑ Treatment Planning
- ↑ Survival
- ↑ Emotional Needs Recognition
- ↓ Aggressive Surgery



# Breast Centers Benefits *(cont.)*

↑ **Quality of Life**

↑ **Team Communication**

↓ **Service Duplication**

↓ **Health Care Costs**

↑ **Educational Opportunities**



# Breast Centers

## Consensus Forum

Discussion on Each Individual Case

Prospective Comprehensive Treatment





# Breast Centers

**Key Point: Quality of Communication**

- Between Physicians**
- Between Patients and Physicians**

**Patient at the Center of Care**

***“Listening is the most important communication skill”***

# Breast Centers

## Europe

### “Florence Statement” (1998)

*“All women across Europe should have access to fully equipped, dedicated breast units.”*

**First EBCC (EUSOMA, EORTC-BCCG, EUROPA DONNA)**



# Breast Centers

## European Guidelines Accreditation of Breast Units

**EBCC:**  
**Brussels (2000)**  
**Hamburg (2004)**  
**Nice (2006)**



# Breast Centers

## GUIDELINES:

- *EUSOMA, EORTC-BCCG*
- *ESSO*
- *BASO*
- *UKNHS*

## CONSENSUS:

- *NIH*
- *NCCN*
- *ST. GALLEN*







*R.W. Blamey, L. Cataliotti*  
*European Journal of Cancer 42: 1331-37, 2006*  
*Position Paper*  
*EUSOMA Accreditation of Breast Units*

# 9

## **The requirements of a specialist Breast Unit**

Authors

R. Blamey

L. Cataliotti

This is a revised version of the original EUSOMA  
position paper published in 2000  
(European Journal of Cancer 2000; 36:2288-2293)



# Breast Centers

## European Parliament (2003)



*“All units involved in screening, diagnosis or therapeutic activities must ensure the formation of proper multidisciplinary team work”*

# Breast Cancer European Parliament Resolution

*Session document 18.10.2006*

European Parliament resolution  
on breast cancer in the enlarged  
European Union

- **Nationwide screening**
- **Nationwide interdisciplinary centers**





# Breast Cancer

## European Parliament Resolution

(25/10/2006)

### Nationwide Interdisciplinary Centers

*“Since treatment in an interdisciplinary Breast Center has proven to raise chances of survival and to improve the quality of life”*



# Van Nuys Breast Center

California, USA, 1979

Melvin J. Silberstein



# NAPBC Member Organizations

**American Board of Surgery**  
**American Cancer Society**  
**American College of Surgeons**  
**American Society of Breast Disease**  
**American Society of Breast Surgeons**  
**American Society of Clinical Oncology**  
**American Society for Therapeutic Radiology  
and Oncology**  
**Association of Cancer Executives**  
**Association of Oncology Social Work**  
**College of American Pathologists**  
**National Cancer Registrars Association**  
**National Consortium of Breast Centers**  
**Oncology Nursing Society**  
**Society of Surgical Oncology**



# SESPM

Spanish Society of Senology and Mammary  
Pathology

SAUM

Accreditation Section  
for Breast Units





# **SIS-International School of Senology**

**October, 2010**

**International Program  
for Breast Centers/Units  
Accreditation**



# Declaration of the UN General Assembly

## September 16, 2011



# **Programs for Accreditation of Breast Centers**

**Global Standard  
For Breast Care**

**?**

# 2<sup>nd</sup> International Congress of Breast Disease Centers

## Paris Statement (2012)

*“All women across the world should have access to fully equipped, quality assured, dedicated Breast Centers/Units, that provide competent and comprehensive care”*



# Common World Platform for Accreditation of Breast Centers



Prof. Ruben Orda



# Common World Platform for Accreditation of Breast Centers

Global Standard  
For Breast Care





# Thank you!!

